

Glass

STORE FRONT DOORS

1-800-486-8415
www.glassstorefrontdoors.com

PRE-ASSEMBLED GLASS ENTRY DOORS

Commercial Glass Store Front Doors
Pre-Assembled and Ready for Quick Install



IN STOCK MODELS AVAILABLE!

Store Front Door

STANDARD & UPGRADE OPTIONS AVAILABLE



Store Front Door

STANDARD & UPGRADE OPTIONS AVAILABLE



Door Size Options

Single Door 3070 / 3' x 7' (40" w x 86" h Out-to-Out Frame)
Double Doors 6070 / 6' x 7' (76" w x 86" h Out-to-Out Frame)
Custom Sizes Available Upon Request

Frame Options

Clear Anodized or Bronze Anodized
Prepped for Wood, Masonry, or Steel Frame Wall Conditions

Glass Options

1/4" Tempered or 1" Tempered Insulated
Standard Clear, Upgraded Tinted, or Low E Coated Glass

Hardware Options

Standard Push / Pull Bar or Upgraded Panic Exit Device
Standard 4" or Upgraded 10" Bottom Rail
Standard Grade 1 or Upgraded Heavy Duty Closer



Other Options

Sidelites
Transoms

Door Inclusions

Standard Grade 1 Closer
Door Sweep
Drip Cap
Narrow Stile Frame
Threshold
4" Bottom Rail
Deadbolt with Inside Thumb Turn
Butt Hinges
Push / Pull Bar
Heavy Duty Wood Crate for Shipment



Door System Options / Upgrades

12", 18", or 24" Sidelites
12", 18", 24", or 36" Transom
Heavy Duty Closer
10" Bottom Rail
Several Tint Options
Low E Coating
Double Key Cylinder

SINGLE DOOR PRICING

Standard Silver

Clear Anodized Frame, 1/4" Clear Tempered Glass,
Push / Pull Bar, Grade 1 Closer, 4" Bottom Rail

\$1,554.00

Standard Bronze

Bronze Anodized Frame, 1/4" Clear Tempered Glass,
Push / Pull Bar, Grade 1 Closer, 4" Bottom Rail

\$1,660.00

Insulated Silver

Clear Anodized Frame, 1 " Clear Insulated Glass,
Push / Pull Bar, Grade 1 Closer, 4" Bottom Rail

\$1,771.00

Insulated Bronze

Bronze Anodized Frame, 1 " Clear Insulated Glass,
Push / Pull Bar, Grade 1 Closer, 4" Bottom Rail

\$1,877.00

Upgrades / Options

10" Bottom Rail for ADA Requirements.....	\$161.00
Panic Exit Device.....	\$495.00
Panic Exit w/ Electric Strike Prep.....	\$1450.00
Tinted Glass (Gray or Bronze).....	\$ 112.00
Dark Tinted Glass (Gray or Bronze).....	\$224.00
Low E Coating.....	\$224.00
Heavy Duty Closer.....	\$440.00
Double Key Cylinder.....	\$ 95.00

Sidelites

12" Sidelite.. (Call for Pricing) 18" Sidelite.. (Call for Pricing) 24" Sidelite.. (Call for Pricing)

Transoms NO SIDELITES

12" Transom	18" Transom	24" Transom	36" Transom
Call For Pricing	Call For Pricing	Call For Pricing	Call For Pricing

Transoms ONE SIDELITE

12" Transom	18" Transom	24" Transom	36" Transom
Call For Pricing	Call For Pricing	Call For Pricing	Call For Pricing

Transoms TWO SIDELITES

12" Transom	18" Transom	24" Transom	36" Transom
Call For Pricing	Call For Pricing	Call For Pricing	Call For Pricing



DOUBLE DOOR PRICING

Standard Silver

Clear Anodized Frame, 1/4" Clear Tempered Glass,
Push / Pull Bar, Grade 1 Closer, 4" Bottom Rail

\$2,836.00

Standard Bronze

Bronze Anodized Frame, 1/4" Clear Tempered Glass,
Push / Pull Bar, Grade 1 Closer, 4" Bottom Rail

\$3,005.00

Insulated Silver

Clear Anodized Frame, 1 " Clear Insulated Glass,
Push / Pull Bar, Grade 1 Closer, 4" Bottom Rail

\$3,253.00

Insulated Bronze

Bronze Anodized Frame, 1 " Clear Insulated Glass,
Push / Pull Bar, Grade 1 Closer, 4" Bottom Rail

\$3,422.00

Upgrades / Options

10" Bottom Rail for ADA Requirements.....	\$322.00
Panic Exit Device.....	\$990.00
Tinted Glass (Gray or Bronze).....	\$224.00
Dark Tinted Glass (Gray or Bronze).....	\$448.00
Low E Coating.....	\$448.00
Heavy Duty Closer.....	\$880.00
Double Key Cylinder.....	\$ 95.00



Sidelites

12" Sidelite.. (Call for Pricing) 18" Sidelite.. (Call for Pricing) 24" Sidelite.. (Call for Pricing)

Transoms NO SIDELITES

12" Transom	18" Transom	24" Transom	36" Transom
Call For Pricing	Call For Pricing	Call For Pricing	Call For Pricing

Transoms ONE SIDELITE

12" Transom	18" Transom	24" Transom	36" Transom
Call For Pricing	Call For Pricing	Call For Pricing	Call For Pricing

Transoms TWO SIDELITES

12" Transom	18" Transom	24" Transom	36" Transom
Call For Pricing	Call For Pricing	Call For Pricing	Call For Pricing



In Stock
MODELS AVAILABLE

READY TO CRATE & SHIP

In Stock Silver Single Door

Clear Anodized Frame, 1" Clear Insulated Glass,
Push / Pull Bar, Grade 1 Closer, 10" Bottom Rail
\$1,932.00

In Stock Bronze Single Door

Bronze Anodized Frame, 1" Clear Insulated Glass,
Push / Pull Bar, Grade 1 Closer, 10" Bottom Rail
\$2,038.00

In Stock Silver Double Door

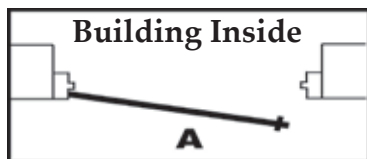
Clear Anodized Frame, 1" Clear Insulated Glass,
Push / Pull Bar, Grade 1 Closer, 10" Bottom Rail
\$3,575.00

In Stock Bronze Double Door

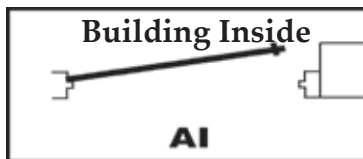
Bronze Anodized Frame, 1" Clear Insulated Glass,
Push / Pull Bar, Grade 1 Closer, 10" Bottom Rail
\$3,744.00



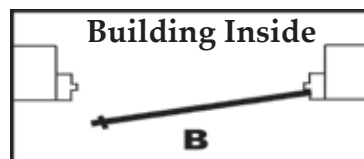
Single Door Swing OPTIONS AVAILABLE



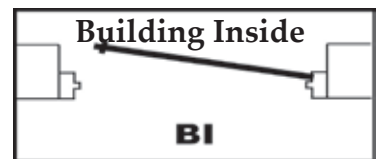
Building Inside
Building Outside



Building Inside
Building Outside

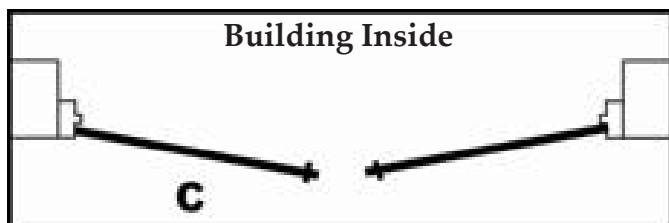


Building Inside
Building Outside

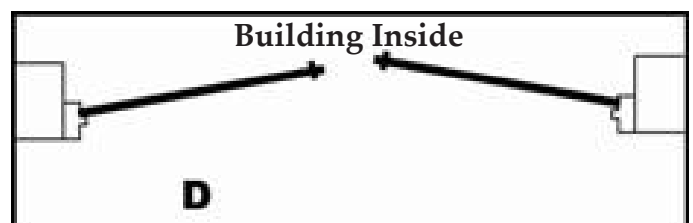


Building Inside
Building Outside

Double Door Swing OPTIONS AVAILABLE



Building Inside
Building Outside



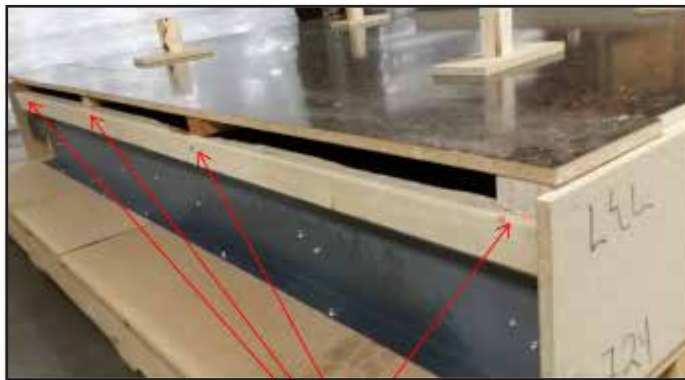
Building Inside
Building Outside

Store Front Door

SHIPPING & DELIVERY



Our doors are pre-assembled and crated ready for shipment. We build custom wooden crates with stringers on top to aid in prevention of shipping damages.



2 x 4 Stringers Across the Top



PRE-ASSEMBLED DOORS ARE READY FOR QUICK INSTALL, SAVING ON INSTALLATION COSTS.





Glass Entry Door Order Form

Fill In & Email To info@buildingoutlet.com or Fax To 303-948-2059

Business Name: _____ Contact: _____
 Ship Address: _____ Phone: _____
 Email: _____

	3070 Single Door	Qty	6070 Double Door	Qty
In Stock Silver Clear Frame, 1" Insulated Glass, Push / Pull Bar, Grade 1 Closure, 10" Bottom Rail	\$1,932.00		\$3,575.00	
In Stock Bronze Bronze Frame, 1" Insulated Glass, Push / Pull Bar, Grade 1 Closure, 10" Bottom Rail	\$2,038.00		\$3,744.00	
Standard Silver Clear Frame, 1/4" Tempered Glass, Push / Pull Bar, Grade 1 Closure, 4" Bottom Rail	\$1,554.00		\$2,836.00	
Standard Bronze Bronze Frame, 1/4" Tempered Glass, Push / Pull Bar, Grade 1 Closure, 4" Bottom Rail	\$1,660.00		\$3,005.00	
Insulated Silver Clear Frame, 1" Insulated Glass, Push / Pull Bar, Grade 1 Closure, 4" Bottom Rail	\$1,771.00		\$3,253.00	
Insulated Bronze Bronze Frame, 1" Insulated Glass, Push / Pull Bar, Grade 1 Closure, 4" Bottom Rail	\$1,877.00		\$3,422.00	
Swing Type (See Swing Chart)				
Door Frame Type (Steel, Wood, Masonry)				
Sub Jamb (L, 6.5", 8", 8.5", 9.5")				
10" Bottom Rail	\$161.00		\$322.00	
Panic Exit Device	\$495.00		\$990.00	
Panic Exit Device w/ Electric Strike Prep	\$1450.00		<i>Not Available</i>	
Gray Tinted Glass	\$112.00		\$224.00	
Dark Gray Tinted Glass	\$224.00		\$448.00	
Bronze Tinted Glass	\$112.00		\$224.00	
Dark Bronze Tinted Glass	\$224.00		\$448.00	
Low E Coating	\$224.00		\$448.00	
Heavy Duty Closure	\$410.00		\$880.00	
Double Key Cylinder	\$95.00		\$95.00	
12" Sidelite Left	Call For Pricing		Call For Pricing	
12" Sidelite Right	Call For Pricing		Call For Pricing	
18" Sidelite Left	Call For Pricing		Call For Pricing	
18" Sidelite Right	Call For Pricing		Call For Pricing	
24" Sidelite Left	Call For Pricing		Call For Pricing	
24" Sidelite Right	Call For Pricing		Call For Pricing	
12" Transom No Sidelites	Call For Pricing		Call For Pricing	
12" Transom 1 Sidelite	Call For Pricing		Call For Pricing	
12" Transom 2 Sidelites	Call For Pricing		Call For Pricing	
18" Transom No Sidelites	Call For Pricing		Call For Pricing	
18" Transom 1 Sidelite	Call For Pricing		Call For Pricing	
18" Transom 2 Sidelites	Call For Pricing		Call For Pricing	
24" Transom No Sidelites	Call For Pricing		Call For Pricing	
24" Transom 1 Sidelite	Call For Pricing		Call For Pricing	
24" Transom 2 Sidelites	Call For Pricing		Call For Pricing	
36" Transom No Sidelites	Call For Pricing		Call For Pricing	
36" Transom 1 Sidelite	Call For Pricing		Call For Pricing	
36" Transom 2 Sidelites	Call For Pricing		Call For Pricing	

Custom Door Sizes Available. Please Call For a Custom Quote 800-486-8415

Fill In And Fax To 303-948-2059

Credit Card Authorization Form

Fill In As Info Appears On Card

Name: _____
Billing Address: _____

City: _____ **State:** _____ **Zip:** _____
Card Type: _____
Card Number: _____
Exp. Date: _____ **CVV2/CVC Code:** _____
Charge Amount: _____ **Deposit Amount:** _____
Amount To Be Charged Upon Shipment: _____
Cardholder Signature: _____ **Date:** _____

Cardholder acknowledge receipt of goods and/or services in the amount of the hereon and agree to perform the obligations set forth in the Cardholder's agreement with the issuer. Payment, terms and product warranties are subject to terms listed in the web site. Card holder agrees that seller can run card for any past due balances or for sales tax if applicable.

Wire Transfer Info

Call 1-800-486-8415 for Wire Information.

Mail In Check

Building Outlet Corporation
7631 Shaffer Pkwy Suite C,
Littleton, CO 80127

****Checks MUST be overnighted for Rush Orders****

PAYMENT DUE IN FULL PRIOR TO PRODUCTION --- PAYMENT OPTIONS: Balance must be received before order goes to production. THIS ORDER IS SUBJECT TO THE PURCHASE TERMS POSTED ON THE WEBSITE OR YOU CAN REQUEST THE TERMS TO ACCOMPANY THIS AGREEMENT. BUILDING OUTLET CORP IS NOT RESPONSIBLE FOR CONSEQUENTIAL OR INCIDENTAL DAMAGES. PAYMENT CONSTITUTES ACCEPTANCE EVEN WITHOUT SIGNATURES. DELAYED SHIPMENTS OR WARRANTY CLAIMS DO NOT QUALIFY FOR REFUNDS. SELLER AGREES TO REMEDY APPROVED WARRANTY OR VALID AND NOTED SHIPPING CLAIMS.